



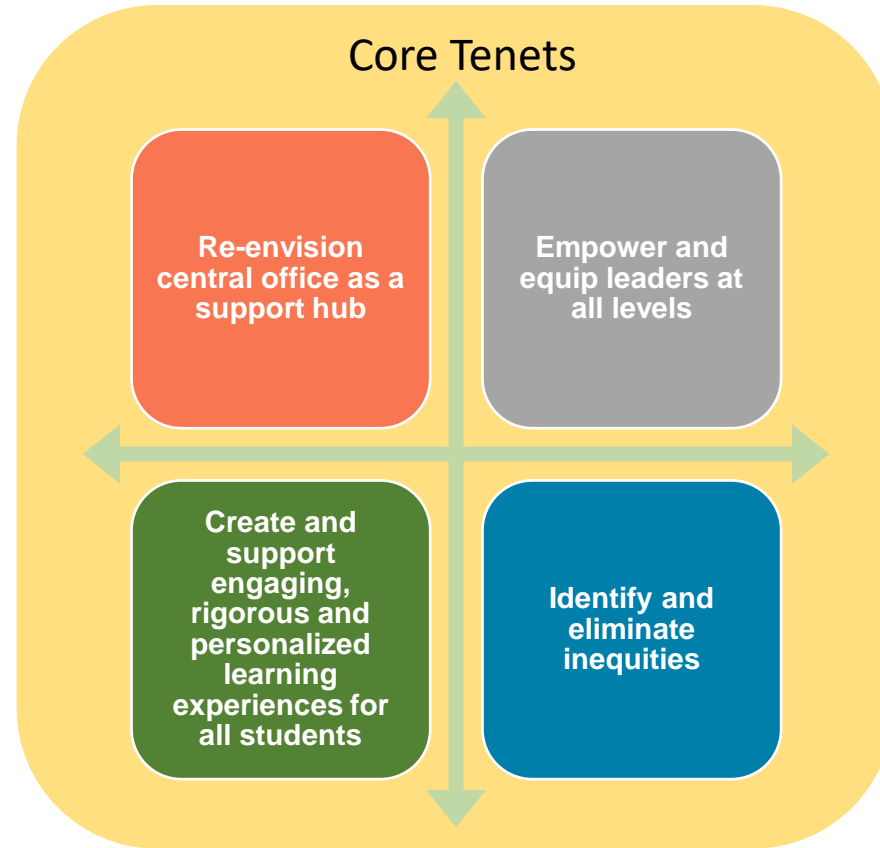
2023-2024

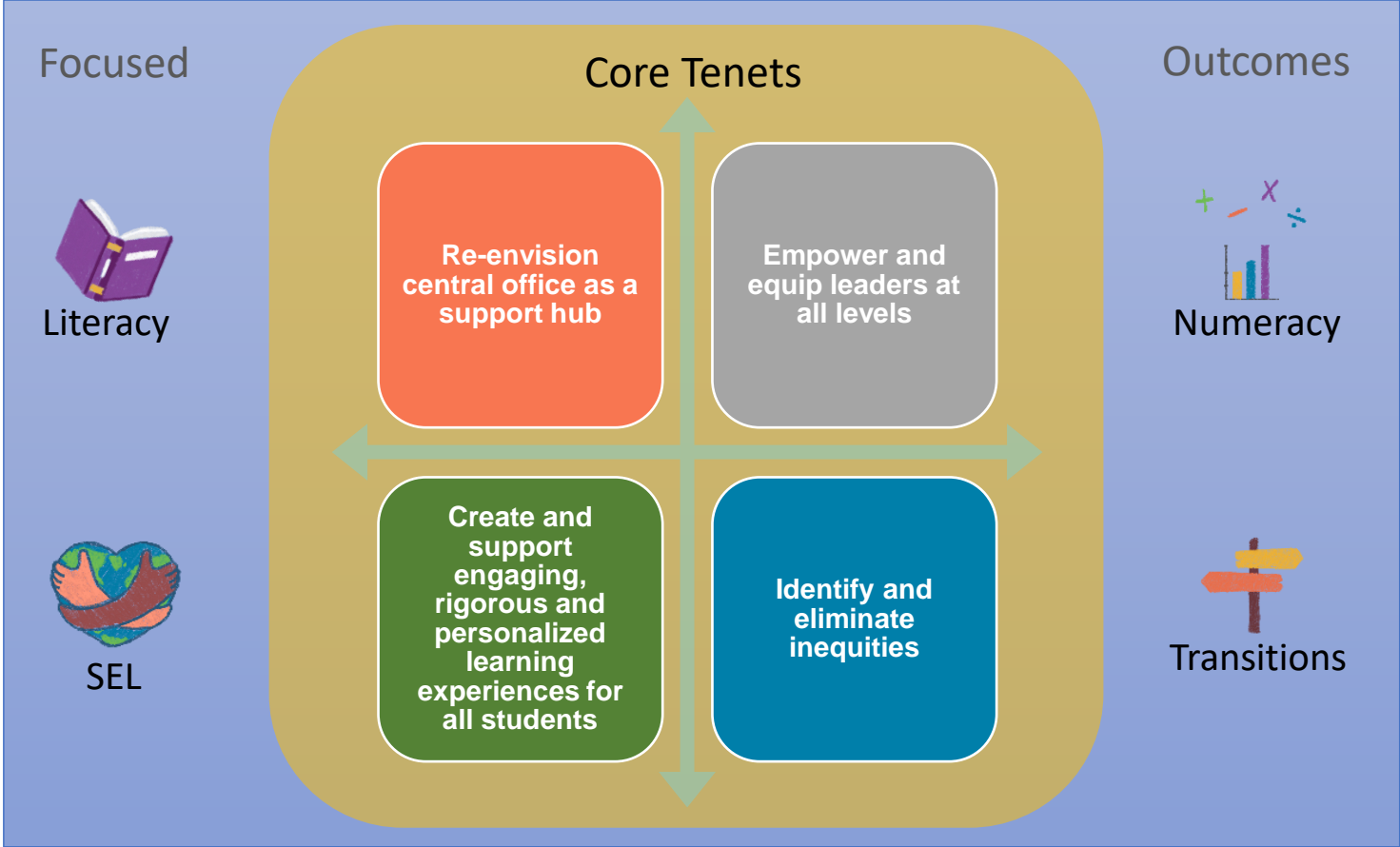
METRO SCHOOLS 
Reimagined **ED**
Updates



METRO
NASHVILLE
PUBLIC
SCHOOLS

Core Tenets





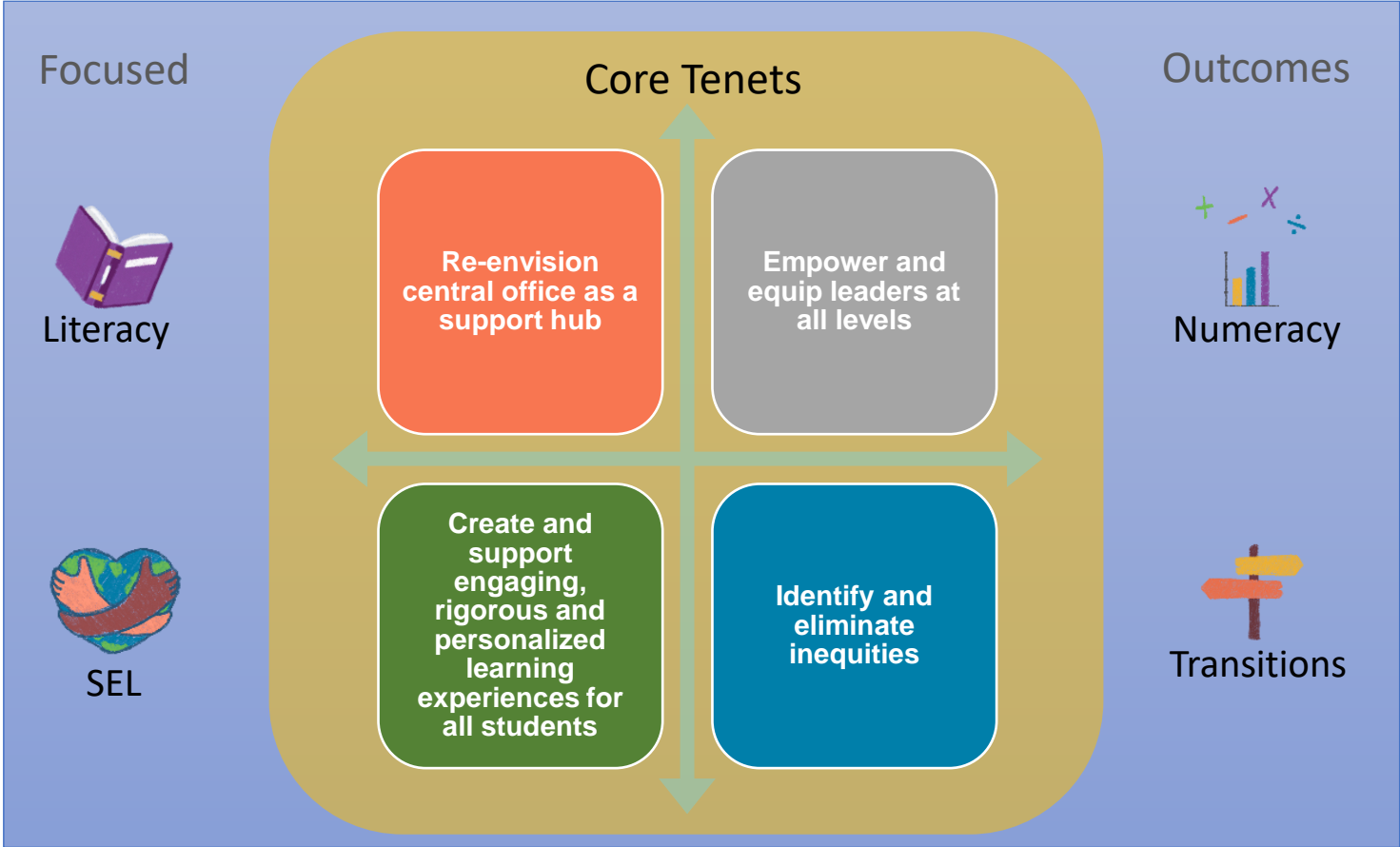
SIGNATURE INITIATIVES

Personalized Student Dashboard

Navigators

Literacy Reimagined

Math {n}



Results-Focused Innovation

Central Office Support Hub

Metro Schools ReimaginED

Community Support Hubs

Leadership Framework

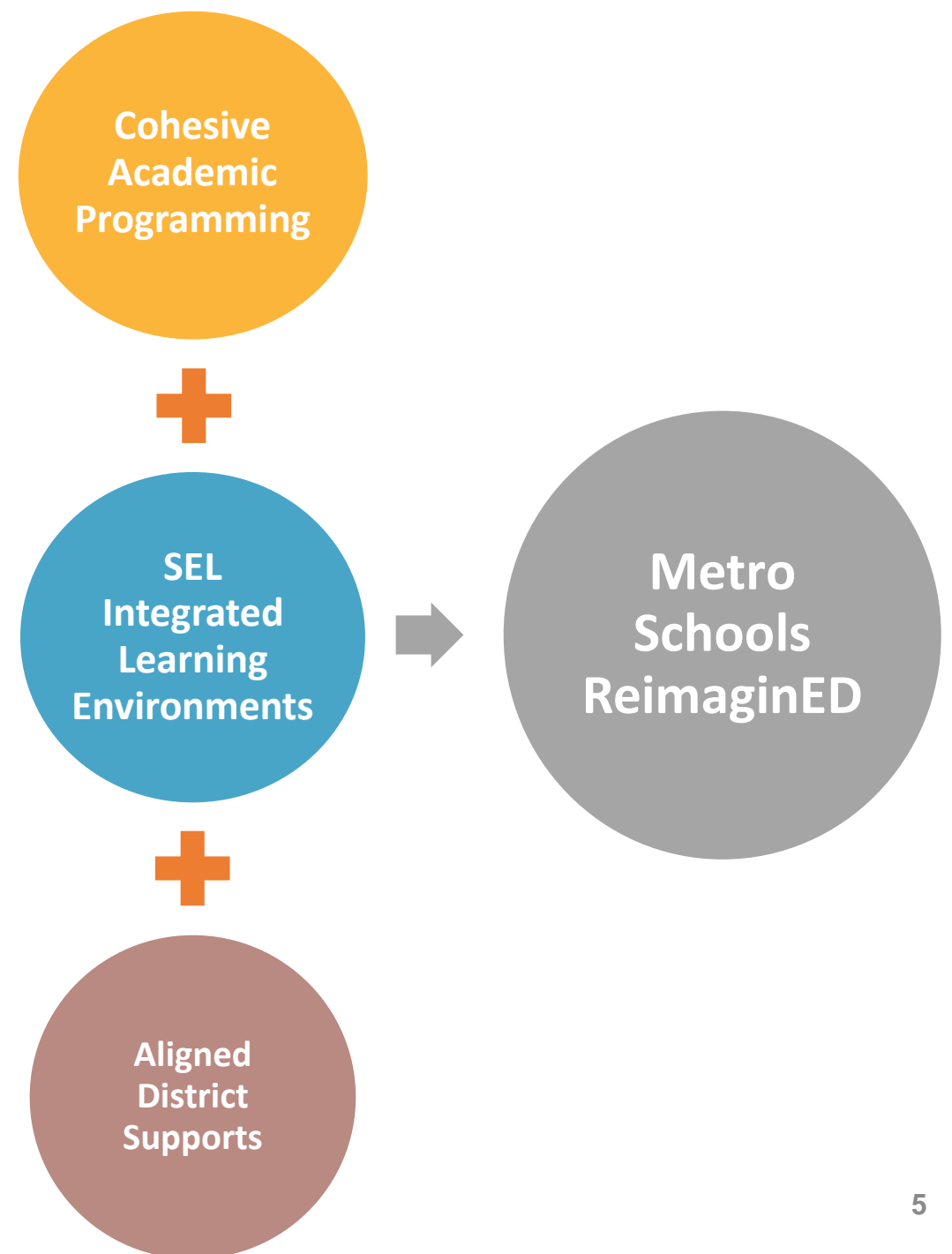
Scholars Portfolio

Equity Roadmap

University MNPS

VISION

To reimagine the ways in which MNPS provides equitable educational opportunities for ALL students in identified clusters through a synthesis of in-depth academic data dives, community input and feedback, and research about how to best support students and communities



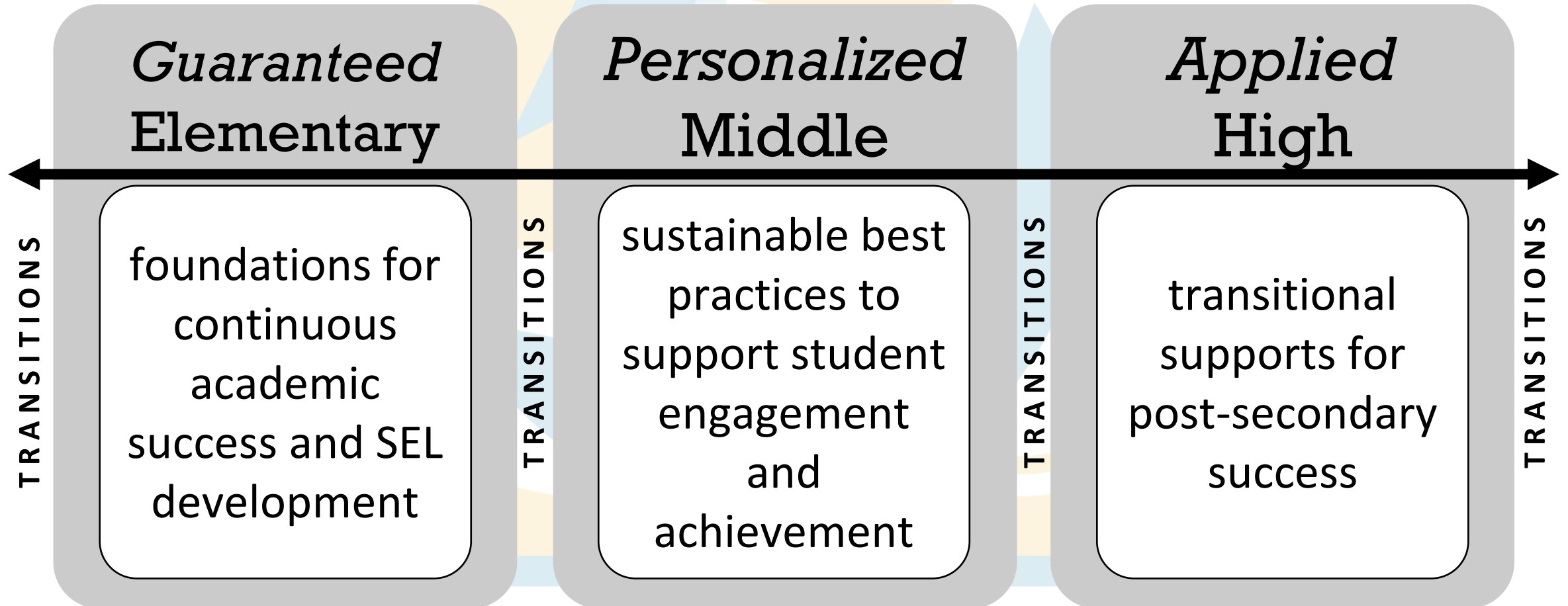
ReimaginED
Pathways

+

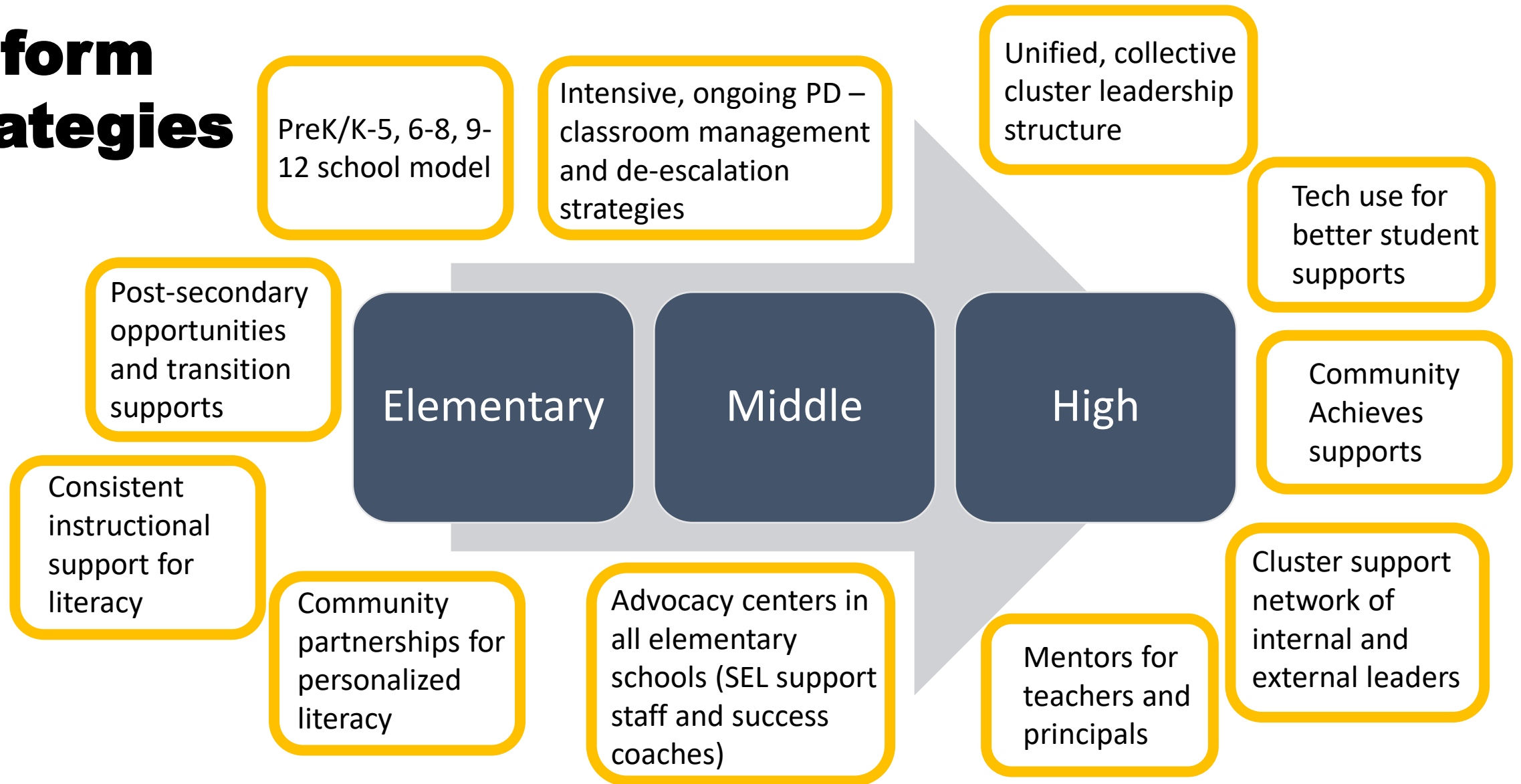
Tier
Experiences

=

Every Student Known!
Ready Graduates!



Uniform Strategies



Reimagined

5th Grade Transition

Final Phase



METRO
NASHVILLE
PUBLIC
SCHOOLS

5th Grade Transition

- Final phase focuses on clusters in the south—Antioch, Cane Ridge, Glenclyff, and Overton
- Ongoing collaboration between Division of Schools and Facilities in preparation for transitions
- Ongoing planning sessions with various Support Hub Departments to support principals
- Ongoing supports from HR for teachers as needed
- Translated communications about transition will be shared with families
- Magnet middle schools transition to 6-8 model for SY 24-25

ReimaginED 5th Grade Transition Final Phase

Elementary		Middle
Antioch		
J.E. Moss Lakeview Mt. View	Smith Springs Edison	Apollo J.F. Kennedy
Cane Ridge		
A.Z. Kelley	Maxwell	Marshall
Glenciff		
Glenciff Glengarry	Paragon Mills	Wright
Overton		
Granbery Haywood	Shayne Tusculum	McMurray Oliver
Magnet Middle		
		East Nashville Head Meigs Rose Park I.T. Creswell

Advanced Planning – Head-MLK Pathway



METRO
NASHVILLE
PUBLIC
SCHOOLS

Redesigned 6-8 and 9-12 Pathway – A Brighter Future Together

- **Aligns grade bands to better meet the needs of middle-school (6-8) students and high-school (9-12) students**
- **Provides focus on programming that targets each tier**
- **Creates opportunities to strengthen academic offerings and partnerships between schools**
- **Implements a phased model that strategically supports students and sustains the current pathway for students already enrolled**
- **Maintains Head as a theme magnet and MLK as an academic magnet**
- **Increases seats at each school**

PHASE 1

SY 24-25

Head
transitions to
grades 6-8

**Head becomes 6-8
with increased
seats at all grade
levels,
MLK remains 7-12**

PHASE 1

SY 24-25

Head
transitions to
grades 6-8

**Head becomes 6-8
with increased
seats at all grade
levels,
MLK remains 7-12**

PHASE 2

SY 25-26

Planning and
preparing for
redesigned
pathway

**Head remains 6-8,
MLK remains 7-12,
Rebranding - MLK at
Head Magnet Middle**

PHASE 1

SY 24-25

Head transitions to grades 6-8

Head becomes 6-8 with increased seats at all grade levels, MLK remains 7-12

PHASE 2

SY 25-26

Planning and preparing for redesigned pathway

Head remains 6-8, MLK remains 7-12, Rebranding - MLK at Head Magnet Middle

PHASE 3

SY 26-27

MLK transitions to grades 8-12

Head remains 6-8, MLK becomes 8-12

PHASE 1

SY 24-25

Head transitions to grades 6-8

Head becomes 6-8 with increased seats at all grade levels, MLK remains 7-12

PHASE 2

SY 25-26

Planning and preparing for redesigned pathway

Head remains 6-8, MLK remains 7-12, Rebranding - MLK at Head Magnet Middle

PHASE 3

SY 26-27

MLK transitions to grades 8-12

Head remains 6-8, MLK becomes 8-12

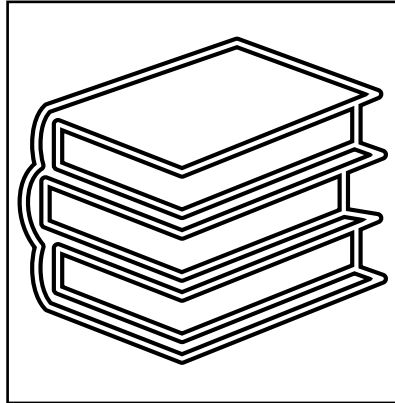
PHASE 4

SY 27-28

MLK transitions to grades 9-12

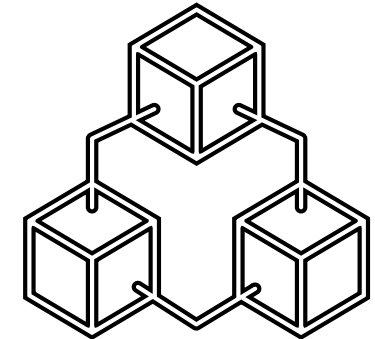
Head remains 6-8, MLK becomes 9-12 with increased seats at all grade levels

ReimaginED Next Steps



Cluster Academic
Pathways

Unified Cluster
Leadership
Structure



How can the Board continue to support

- **Continue to educate your communities and support the ReimaginED uniform strategies**
- **Continue to attend and support cluster events**
- **Continue to advocate for funding – Advocacy Centers, Peace Centers, Community Achieves**

Thank you!



METRO
NASHVILLE
PUBLIC
SCHOOLS